

Atlas 抗體全面 7 折

BEING #1 IN IHC IS NOT ONE THING

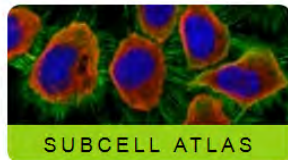
促銷期間
2/21-4/20, 2018

超過 4000 支抗體經過 IHC Enhanced Validation

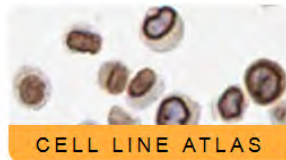
Atlas 抗體涵蓋8300種的human protein, 每支抗體皆經過細胞免疫螢光染色 ICC, 與組織免疫化學 IHC 之驗證, 同時提供蛋白質在不同組織部位之表現數據, 其中有超過 4000種抗體經過 IHC Enhanced Validation。



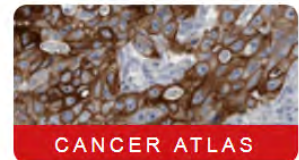
正常組織 IHC data



gene 在細胞及其周邊的表現位置跟狀況, 提供高解析度及多種顏色螢光的 IF 圖。



gene 在不同的細胞株中的 RNA 和蛋白質表現量。



Cancer 組織 IHC data

IHC Enhanced Validation 的驗證方法, 是將抗體染色強度, 與測試組織的RNA表現進行平行比較, 每種抗體選擇兩種組織作為驗證的樣品, 一種為高表現量的組織, 另一種為RNA表現量低或是不表現的組織。在高表現與低表現的組織中, 其RNA表現量至少有五倍的差異。

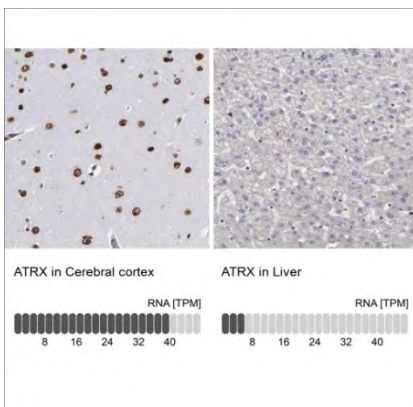


Fig1: orthogonal validation of [Anti-ATRX antibody \(HPA001906\)](#) in IHC by staining of cerebral cortex and liver tissues, comparing to ATRX RNA-seq data are presented for the same tissues.

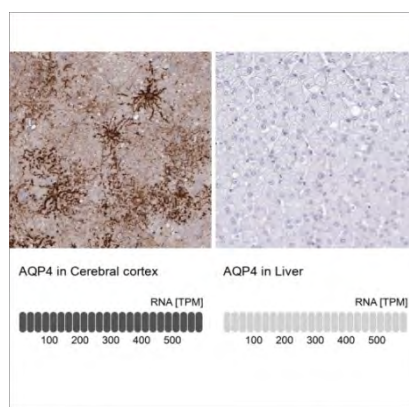


Fig2: orthogonal validation of [Anti-AQP4 antibody \(HPA014784\)](#) in IHC by staining of cerebral cortex and liver tissues, comparing to ATRX RNA-seq data are presented for the same tissues.

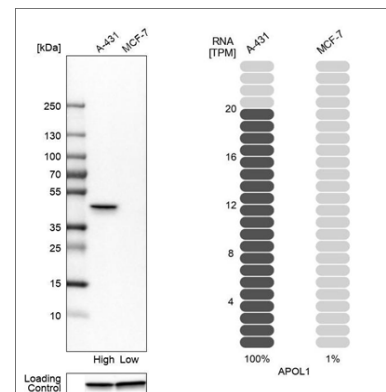


Fig3: orthogonal validation of [Anti-APOL1 antibody \(HPA018885\)](#) by Western blot analysis in human cell lines A-431 and MCF-7. Corresponding APOL1 RNA-seq data are presented for the same cell lines

DM10701006



友和貿易股份有限公司
UNI-ONWARD Corp.
客服專線: (02)2600-0611

◆台北 TEL:(02)2600-6699 FAX:(02)2600-0799
◆新竹 TEL:(03)658-0508 FAX:(03)658-0509
◆台中 TEL:(04)2355-2008 FAX:(04)2355-2006
◆嘉義 TEL:(05)2238-001 FAX:(05)2233-519

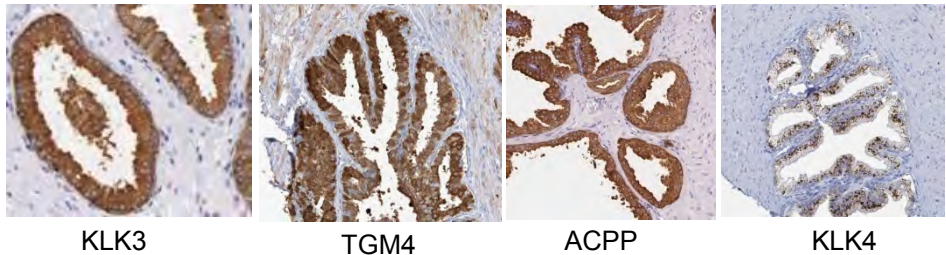
◆台南 TEL:(06)249-5488 FAX:(06)249-5499
◆高雄 TEL:(07)347-7776 FAX:(07)347-1245
◆花蓮 TEL:(03)836-0065 FAX:(03)836-0075
www.uni-onward.com.tw

Top Sale Atlas

Target Protein	品號	應用	Target Application
TLE3	HPA054116	IHC, IF, WB	子宮頸癌預後指標
PLA2R1	HPA012657	IHC, WB	胃癌的預後指標
ARID1A	HPA005456	IHC, IF, WB	肝癌的預後指標
MCU	HPA016480	IHC, IF, WB	肝癌及腎癌的預後指標
APOL1	HPA018885	IHC, WB	肝癌及腎癌的預後指標
TFE3	HPA023881	IHC, IF, WB	肝癌及腎癌的預後指標
MTDH	HPA015104	IHC, IF, WB	肝癌/腎癌/胰臟癌的預後指標
ZEB1	HPA027524	IHC, IF	腎癌的預後指標
DEPDC2	HPA015234	IHC	腎癌的預後指標
THSD7A	HPA000923	IHC	腎癌的預後指標
CRBN	HPA045910	IHC, IF, WB	Neuroscience
AFP	HPA010607	IHC, IF, WB	羊水水中的甲胎蛋白水平被用來測量蛋白質的腎損失以篩查脊柱裂和無腦畸形。
ATRX	HPA001906	IHC, WB	Epigenetics
APOBEC3A	HPA043237	IHC	Immnu Anti-virus

前列腺癌研究

人體的所有蛋白有67%在Prostate會表現出, 其中在 prostate 有相較於其他組織來說較高的表現量, 而且超過其他組織5倍高表現量, 可視為 prostate-specific (enriched) gene



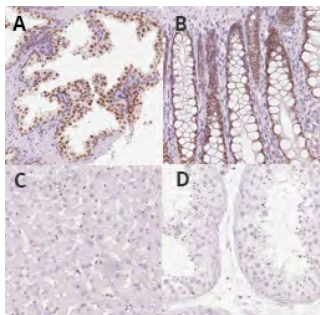
KLK3

TGM4

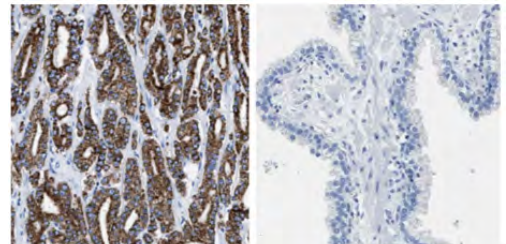
ACPP

KLK4

Target protein	品號	應用	Description	Predicted localization
KLK3	HPA000764	IHC	kallikrein-related peptidase 3	Secreted
TGM4	HPA032072	IHC	transglutaminase 4	Intracellular
ACPP	HPA063916	IHC, WB	acid phosphatase, prostate	Intracellular,Membrane, Secreted
KLK4	HPA051839	IHC	kallikrein-related peptidase 4	Intracellular,Secreted
SLC45A3	HPA019075	IHC,IF,WB	solute carrier family 45, member 3	Membrane
MSMB	HPA051257	IHC, WB	microseminoprotein, beta-	Secreted



IHC staining of human prostate (A), colon (B), liver (C) and testis (D) tissues with [Anti-HOXB13 antibody \(HPA062852\)](#) showing grouped expression in prostate and colon.



The [Anti-AMACR antibody \(HPA019527\)](#) shows strong positivity in prostate cancer samples (left) compared to normal prostate (right).

乳癌研究

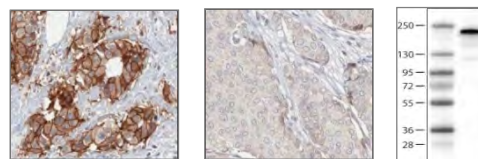
Clinical markers

Target Protein	品號	應用
Estrogen receptor	HPA000449	IHC,WB
	HPA000450	IHC,WB
Progesteron receptor	HPA004751	IHC,ICC-IF
	HPA008428	IHC
	HPA017176	IHC
HER2/ERBB2	HPA001383	IHC,WB
	AMAb90627	IHC,WB
Ki67/MKI67	HPA000451	IHC,ICC-IF
	HPA001164	IHC,ICC-IF
	AMAb90870	IHC

更多用於乳癌研究相關抗體

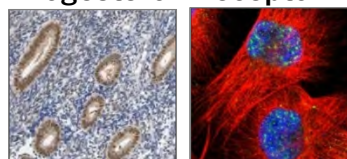
Target Protein	品號	應用
53BP1	HPA008788	IHC,ICC-IF
53BP1	HPA022133	IHC,WB*,ICC-IF
ACAT1	HPA004428	IHC,WB*,ICC-IF
ACAT1	HPA007569	IHC,WB,ICC-IF
AGR2	HPA007912	IHC,WB
AIB1/NCOA3	HPA024210	IHC,ICC-IF
Anillin/ANLN *	HPA005680	IHC,WB,ICC-IF
ARG1	HPA024006	IHC,WB
ASAH1	HPA005468	IHC,WB
ATR	HPA028264	IHC
BAAT1/BRAT1	HPA029455	IHC
BACH1	HPA003175	IHC,WB,ICC-IF
BAP1	HPA028814	IHC,WB,ICC-IF
BARD1	HPA044864	IHC,ICC-IF
Beta-Catenin	HPA029159	IHC,WB*,ICC-IF
BIRC3/API2	HPA002317	IHC,WB,ICC-IF
BIT1/PTRH2	HPA012897	IHC,WB,ICC-IF
Blooms Syndrome Protein	HPA005689	IHC,ICC-IF
Bmi1	HPA030472	IHC,WB*,ICC-IF
BRCA1	HPA034966	IHC
BRCA2	HPA026815	IHC,ICC-IF
BRIP1/FANCI	HPA005474	IHC,WB,ICC-IF
C11orf51/ANAPC15	HPA036596	IHC,WB,ICC-IF
CAR/NR1H3	HPA051365	IHC,ICC-IF
CASP8	HPA005688	IHC,WB,ICC-IF
CD44	HPA005785	IHC,WB,ICC-IF
CD82	HPA028900	IHC,WB
CDH1	HPA004812	IHC,ICC-IF

HER2 /ERBB2



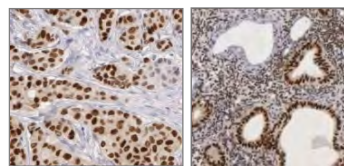
Immunohistochemical staining of human breast tumour using Anti-HER2 (AMAb90627) shows strong membranous (combined with moderate cytoplasmic) positivity in tumour cells in HER2-positive ductal carcinoma, while HER2-negative ductal carcinoma shows no membranous positivity. By WB analysis, HER2 is detected in the breast cancer cell line SK-BR-3.

Progesteron receptor



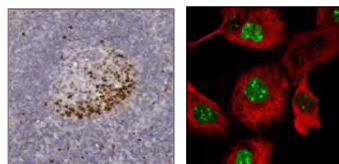
IHC staining using the Anti-PGR antibody (HPA004751) in normal human corpus (uterine) tissue shows strong nuclear positivity in glandular cells. In the presented breast cancer sample, the staining of tumor cells is also nuclear. ICC-IF shows nuclear staining in U-251MG cells.

Estrogen Receptor



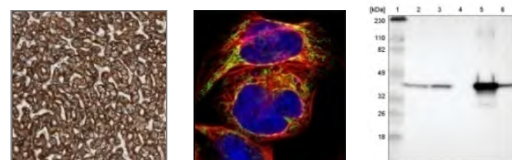
IHC staining using the Anti-ESR1 antibody (HPA000450) shows strong nuclear positivity in glandular and stromal cells of human corpus, uterine tissue and in tumor cells in breast cancer.

Ki67

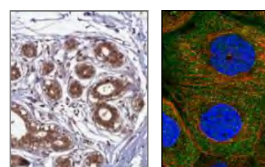


IHC staining of human tonsil tissue using the Anti-MKI67 antibody (HPA001164) shows nuclear staining of reaction center cells

ACAT1 (HPA004428)



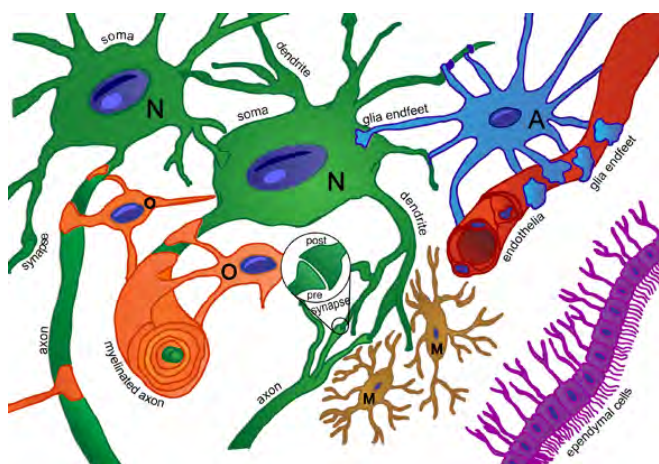
Immunoperoxidase staining of formalin-fixed, paraffin-embedded human duodenum tissue showing granular cytoplasmic staining of glandular cells.



BRCA1

The Anti-BRCA1 antibody (HPA034966) shows positivity in glandular cells in normal human breast tissue and in tumor cells in breast cancer samples using IHC.

神經科學研究



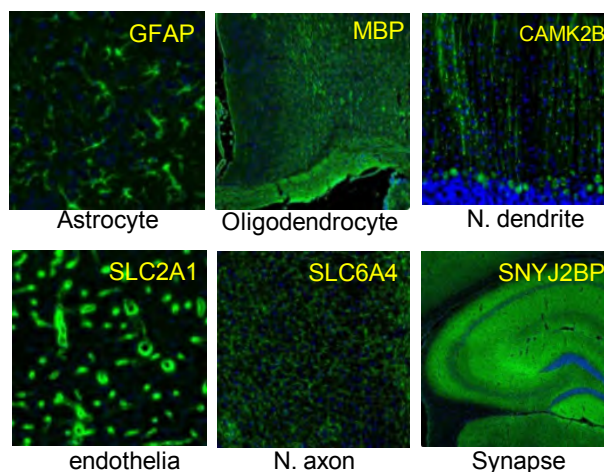
The different types of neurological cell classes (ependymal cells, purple), subpopulations (A=astrocytes, blue; M=microglia, brown; N=neuron, green; O=oligodendrocytes, orange), and subcellular locations (axon, dendrite, synapse, and glia endfeet).

Atlas 針對齒動物和人類神經細胞, 提供了一系列 Neuroscience Marker, 這些 Marker 可用於解頗學上辨識特殊的神經細胞類型, 像是中樞神經或是周邊神經系統的細胞。

- 這一類的Marker 可以辨識由單顆細胞表現的特殊蛋白
- 每支抗體皆經過大鼠, 小鼠和人體組織中的 IHC 驗證
- 多數的神經細胞 Marker 皆用小鼠和人類組織裂解液做WB的驗證

Development

辨認蛋白	品號	應用
SOX11	HPA000536	IHC, WB
PAX6	HPA030775	IHC, IF
RUNX2	HPA022040	IHC, IF, WB
VIM	HPA001762	IHC, IF, WB



Neural Lineage Markers

辨認蛋白	品號	應用
CD68	HPA048982	IHC, WB
S100B	HPA015768	IHC, IF, WB
SCGN	HPA006641	IHC
GFAP	HPA056030	IHC, IF, WB

Aging Neurological Disorders

辨認蛋白	品號	應用
AQP4	HPA014784	IHC, WB
PHGDH	HPA021241	IHC, IF, WB
CD40	AMAB90905	IHC, WB
RHOT1	HPA010687	IHC, WB

Prestige Monoclonals Neuroscience Markers 每支抗體皆在Human, Mouse, Rat 驗證過

Marker for	辨認蛋白	品號	應用	Marker for	辨認蛋白	品號	應用
Neurons	NEFM	AMAb91027	IHC,WB	Acetylcholine neurons	CHAT	AMAb91129	IHC
	NEFH	AMAb91025	IHC,WB	Glutamate neurons	SLC17A7	AMAb91041	IHC,WB
Astrocytes	GFAP	AMAb91033	IHC,WB	GABA nuerons	GAD1	AMAb91078	IHC,WB
	S100B	AMAb91038	IHC,WB		GAD2	AMAb91048	IHC,WB
	GLUL	AMAb91101	IHC,WB	Dopamine nurons	DDC	AMAb91089	IHC,WB
Schwann cells	MBP	AMAb91062	IHC,WB		SLC6A2	AMAb91116	IHC
Oligodendrocytes	MOG	AMAb91066	IHC,WB	noradrenaline neurons	TH	AMAb91112	IHC
	CNP	AMAb91068	IHC,WB	Serotonin neurons	TPH2	AMAb91108	IHC