

Ascentis™ Preparative HPLC Columns

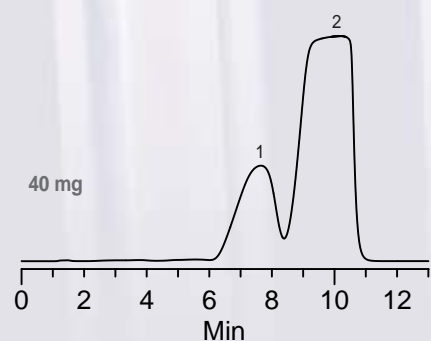
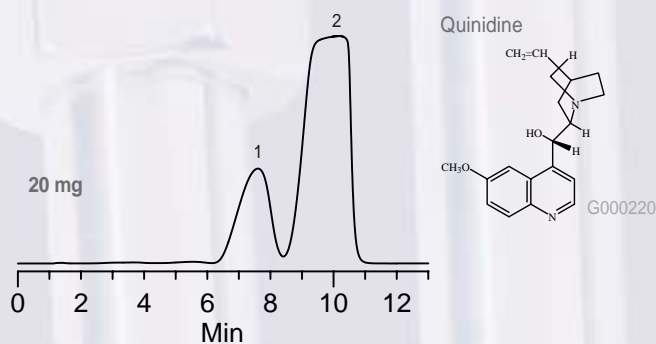
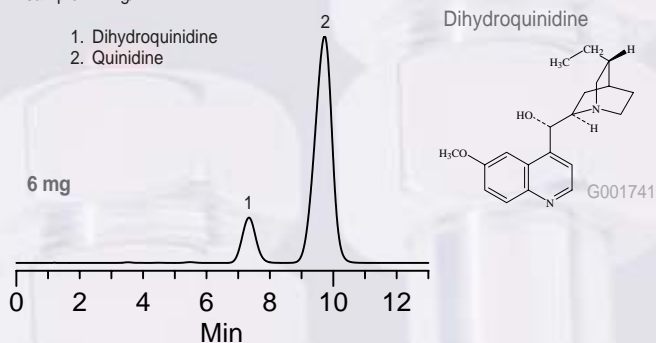
Get MORE Preparative HPLC Performance

Ascentis Delivers:

- High preparative loading capacity
- High column-to-column reproducibility
- Compatibility with a wide range of solvents
- Efficient, predictable scale-up from analytical to prep
- Ultra low bonded phase bleed
- Economical purification

High Loading Capacity

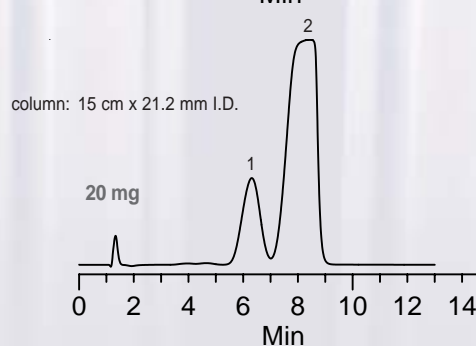
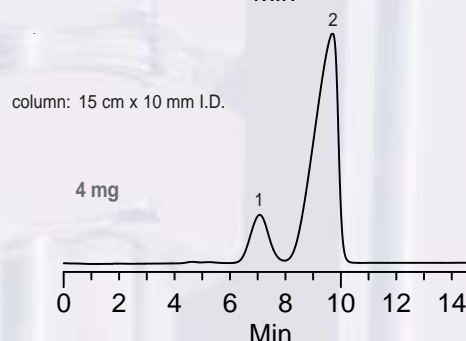
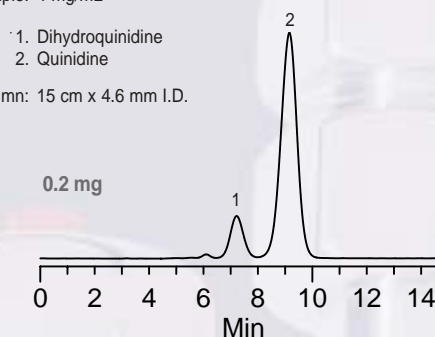
column: Ascentis C18, 15 cm x 21.2 mm I.D., 10 µm particles (561358-U)
mobile phase: 55:45 methanol:50 mM ammonium phosphate (pH 7.0)
flow rate: 5 mL/min.
temp.: ambient
det.: 254 nm
sample: 4 mg/mL



Stable, highly selective bonded phases with the loading capacity necessary to carry out challenging preparative separations.

Predictable Scale-Up

column: Ascentis RP-Amide, 10 µm particles
mobile phase: 55:45 methanol:50 mM ammonium phosphate (pH 7.0)
flow rate: 5 mL/min.
temp.: ambient
det.: 254 nm
sample: 4 mg/mL



Reliable scale-up provides simple and predictable method transfer.



Ascentis C18 Prep

Ascentis C18 is an extremely stable and reliable first choice HPLC column that gives symmetric peak shape and excellent retention even for difficult compounds.

Ascentis C18 Prep delivers:

- Excellent retention and peak shape
- High column-to-column reproducibility
- High loading capacity
- Efficient analytical to prep scale-up

Phase Specifications

USP Code:	L1
Bonded Phase:	Octadecylsilane
Endcapped:	Yes
Particle Shape:	Spherical
Particle Purity:	<5 ppm metals
Particle Size:	5 µm, 10 µm
Pore Size:	100 Å
Surface Area:	450 m ² /g
Carbon Load:	25%
pH Range:	2 to 8
Temp. Range:	≤70 °C

Ascentis RP-Amide Prep

Ascentis RP-Amide is a new generation ultra low bleed, polar embedded RP phase that provides orthogonal selectivity and increased resolution for HPLC and LC-MS analysis of polar compounds.

Ascentis RP-Amide Prep delivers:

- Unique selectivity
- Very low bonded phase bleed
- 100% aqueous compatibility
- Excellent retention and peak shape for polar compounds

Phase Specifications

USP Code:	Pending
Bonded Phase:	Amido embedded reversed-phase
Endcapped:	Yes
Particle Shape:	Spherical
Particle Purity:	<5 ppm metals
Particle Size:	5 µm, 10 µm
Pore Size:	100 Å
Surface Area:	450 m ² /g
Carbon Load:	19.5%
pH Range:	2 to 8
Temp. Range:	≤70 °C

Ordering Information

Phase	Particle Size (µm)	ID (mm)	Length (cm)	Cat. No.
Ascentis C18 Preparative Columns				
	5	10	5	581340-U
	5	10	10	581341-U
	5	10	15	581342-U
	5	10	25	581343-U
	5	21.2	5	581344-U
	5	21.2	25	581347-U
	10	4.6	15	581350-U
	10	4.6	25	581351-U
	10	10	5	581352-U
	10	10	10	581353-U
	10	10	15	581354-U
	10	10	25	581355-U
	10	21.2	5	581356-U
	10	21.2	10	581357-U
	10	21.2	15	581358-U
	10	21.2	25	581359-U

Phase	Particle Size (µm)	ID (mm)	Length (cm)	Cat. No.
Ascentis RP-Amide Preparative Columns				
	5	10	5	565340-U
	5	10	10	565341-U
	5	10	15	565343-U
	5	10	25	565344-U
	5	21.2	5	565345-U
	5	21.2	25	565348-U
	10	4.6	15	565352-U
	10	4.6	25	565353-U
	10	10	5	565354-U
	10	10	10	565355-U
	10	10	15	565356-U
	10	10	25	565357-U
	10	21.2	5	565358-U
	10	21.2	10	565359-U
	10	21.2	15	565360-U
	10	21.2	25	565361-U

If you don't see the column dimension you need, we can help. Contact our Technical Service group at 800-359-3041 or by email at ascentis@sial.com

Ascentis is a trademark of Sigma-Aldrich Co.

Order/Customer Service 800-247-6628, 800-325-3010
Fax 800-325-5052 • E-mail supelco@sial.com

Technical Service 800-359-3041, 814-359-3041
Fax 800-359-3044, 814-359-5468 • E-mail techservice@sial.com

SUPELCO • 595 North Harrison Road, Bellefonte, PA 16823-0048 • 814-359-3441

We are committed to the success of our Customers, Employees and Shareholders through leadership in Life Science, High Technology and Service.
The SIGMA-ALDRICH Family



SUPELCO

sigma-aldrich.com/supelco

©2005 Sigma-Aldrich Co. Printed in USA. Supelco brand products are sold through Sigma-Aldrich, Inc. Sigma-Aldrich, Inc. warrants that its products conform to the information contained in this and other Sigma-Aldrich publications. Purchaser must determine the suitability of the product(s) for their particular use. Additional terms and conditions may apply. Please see reverse side of the invoice or packing slip. Supelco is a registered trademark of Sigma-Aldrich Co.

HWC T405052